

Gordon Bird

1921-2006

Gordon Bird was born in Croydon in 1921. He trained at the Croydon School of Art. He followed his father into the art department of Sir Joseph Causton, printers, and moved to Chandlersford in 1939 when the firm moved to Eastleigh at the start of the war. He returned to the firm after war service in the RAF, and remained with them until retirement in the mid '80s.

Gordon's most interesting work falls naturally into four main sections corresponding to periods of his life:

Early Paintings: His private art from about 1938 until 1950. Until about 2001 Gordon thought that all his early work had been lost! However, in the roof of his house we rediscovered more than 120 mounted canvases painted between 1939 and 1950. Most are from 1948 and 1949, and resulted in a one-man-show in London in 1950. Few have titles (or frames); for these examples we have included a reference number instead, with date and size.

Commercial Work: For Causton's during the '50s and '60s, often designing posters for firms such as Tate & Lyle and Robertsons.

Photography: From the late '60s until the '80s he flourished with Southampton Camera Club. He served as President for two years and was finally made an Honorary Member.

Later Paintings: In the early '70s several Camera Club members asked Gordon to 'teach them to paint'. A modest group resulted, meeting weekly for nearly 20 years. Teaching others aroused his old enthusiasm, and he produced many striking images during this period. There are some 60 framed canvases available from this time, along with several small pen and watercolour sketches. The images are stronger and more controlled than his early period.

Sadly, Gordon died on 19th April 2006, a few days after his 85th birthday. Although he had not painted for some years, he was otherwise active right up to the end and died suddenly while preparing to drive down to us that morning. The chapel was crammed with friends and relatives at his cremation.

Unfortunately, a year or so before his death, Gordon parted with most of his paintings for a pittance to a casual trader who called at the door. Gordon was rather confused, as can happen at that age, and failed to take the man's name or other particulars. And so he, and we, lost track of much of his work. We would of course be interested to hear from anyone who comes across his paintings.

Luckily we had photographed much of his work after finding the early paintings, enabling us to now make this catalogue. We have included titles and dates where known, and sizes in centimetres. The reference numbers are our own, simply referring to our original slides and corresponding data files.

Paul & Ursula Jeffree, Brockenhurst Sept 2006.

email: gbird@pauljeffree.co.uk

01590 622030



4710 22 - 73 x 91 1939 (Board)



5863 32 - 61 x 45 1939 Board



5863 31 - 79 x 47 1940 Board.TIF



4709 28 - 77 x 51 1940



4709 24 - 77 x 51 1940



4709 27 - 77 x 51 Unsigned



4709 26 - 77 x 51 1940



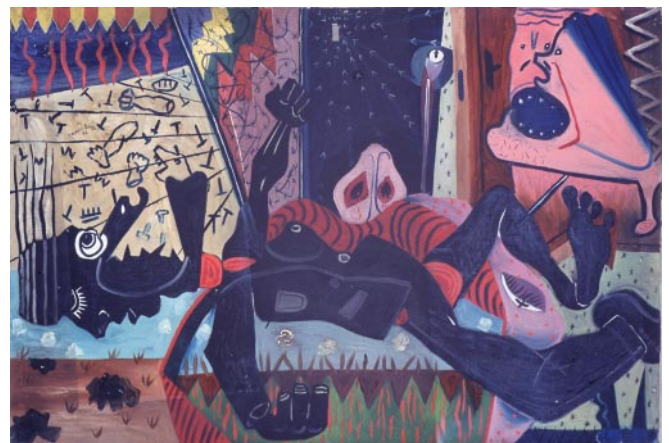
4710 16 - 61 x 91 1940



5863 23 - 71 x 31 1940



4709 23 - 77 x 51 1940



4710 20 - 61 x 91 1940



5863 24 - 71 x 31 1941



4710 27 - 56 x 46 1941



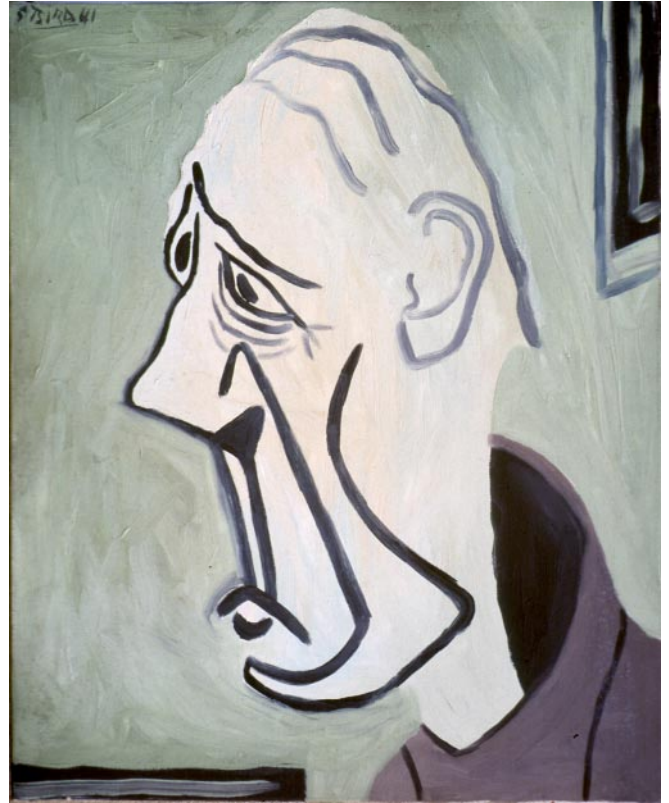
4710 17 - 91 x 61 1941



4710 15 - 91 x 61 1941



5863 16b - 38 x 31 1941



4710 25 - 54 x 43 1941



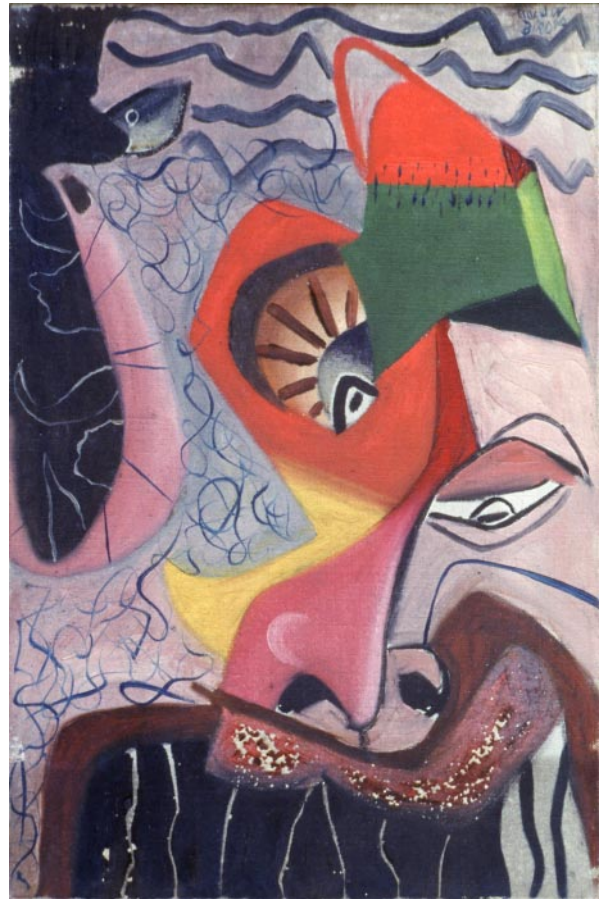
4710 39 - 49 x 39 1941



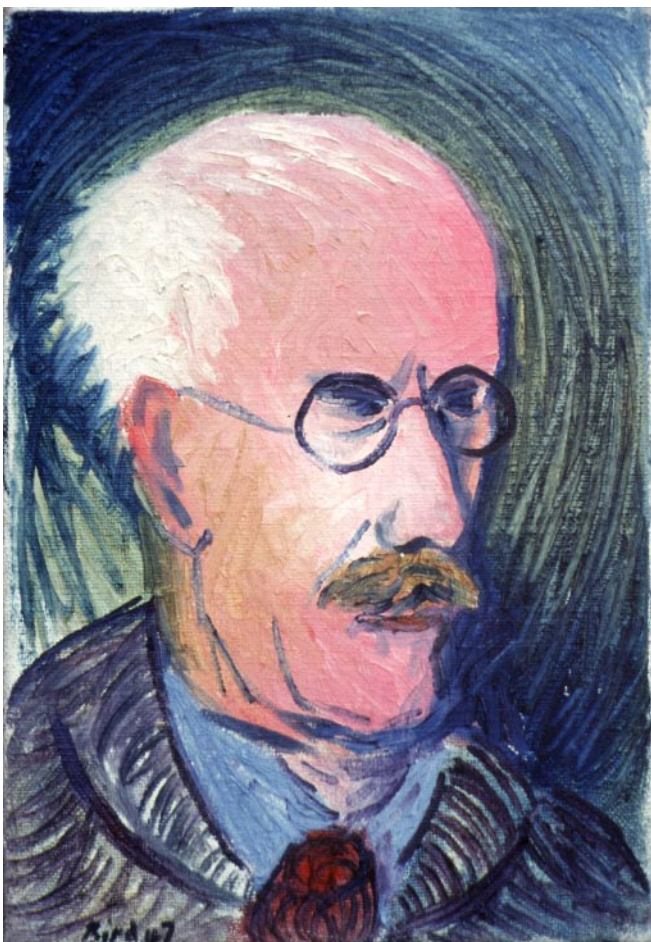
4709 37 - 77 x 61 1941



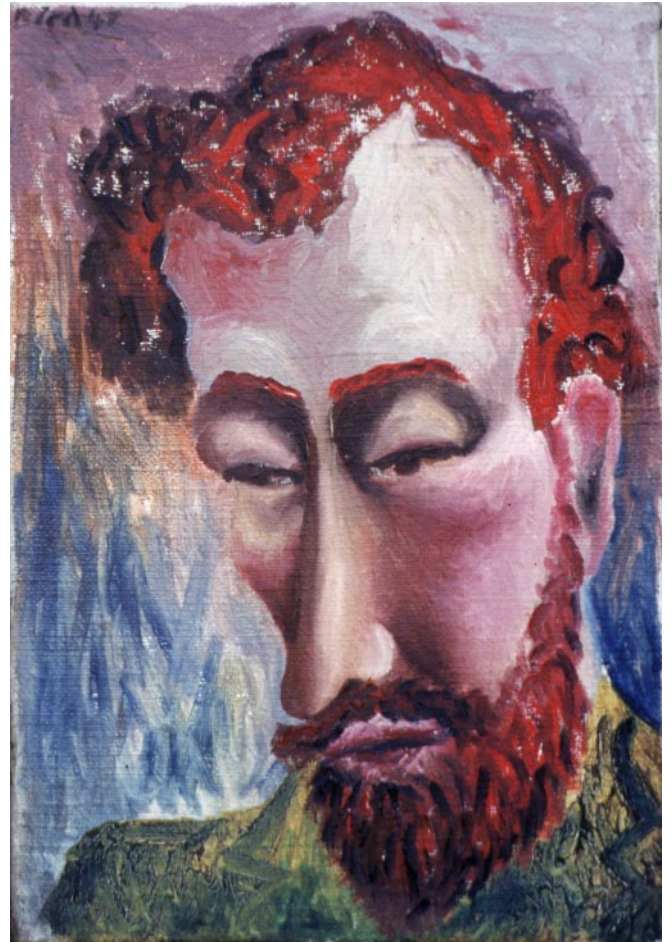
5863 16a - 38 x 31 1941



5863 14b - 46 x 31 1940



5863 08a - 51 x 36 1947



5863 08b - 51 x 36 1947



5863 11a - 46 x 31 1947



5863 05 - 61 x 51 1947



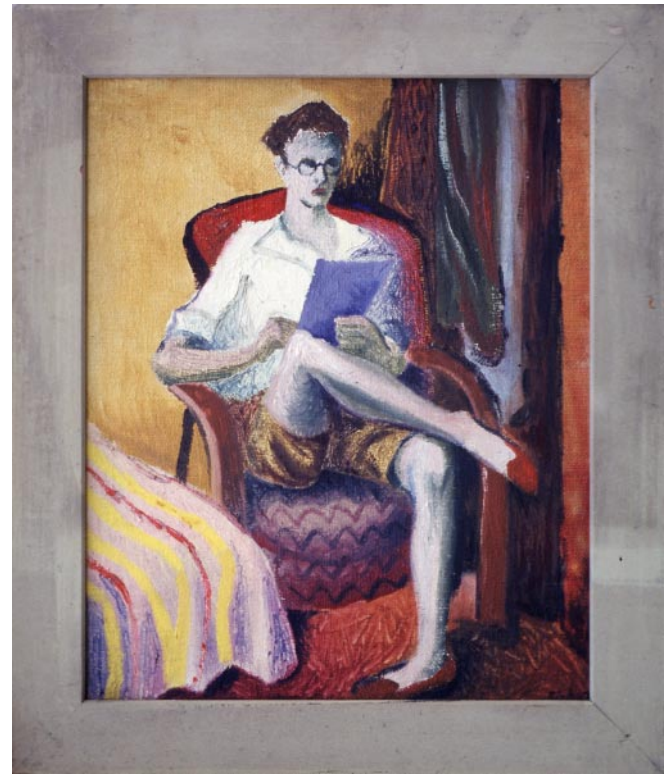
5863 11b - 46 x 36 1947



5863 10b - 41 x 31 1947



5863 01 - 61 x 46 1947



5863 25 - 62 x 52 1947 Board



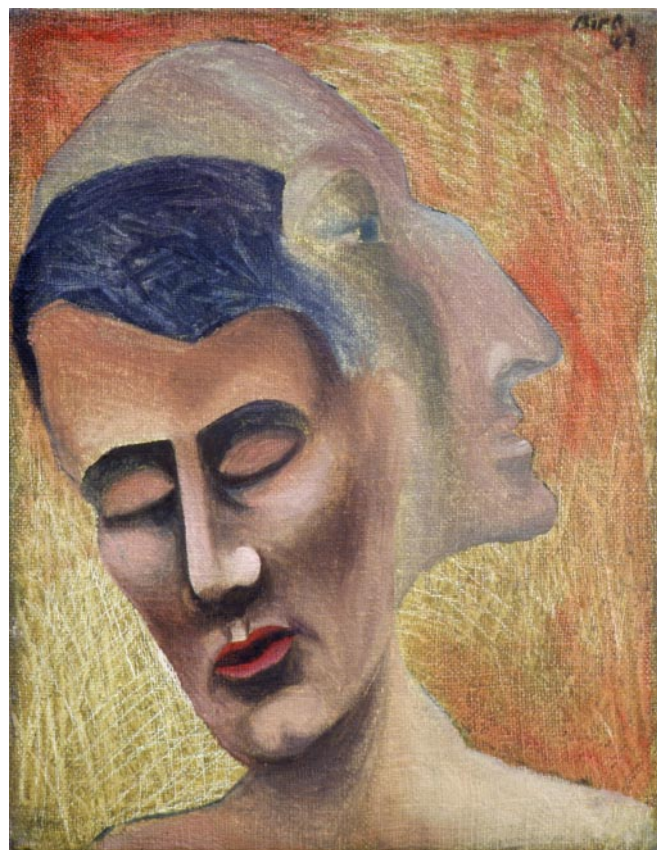
5863 06 - 69 x 51 1947



5863 07 - 77 x 51 1947



5863 09b - 51 x 41 1947



5863 13a - 46 x 36 1947



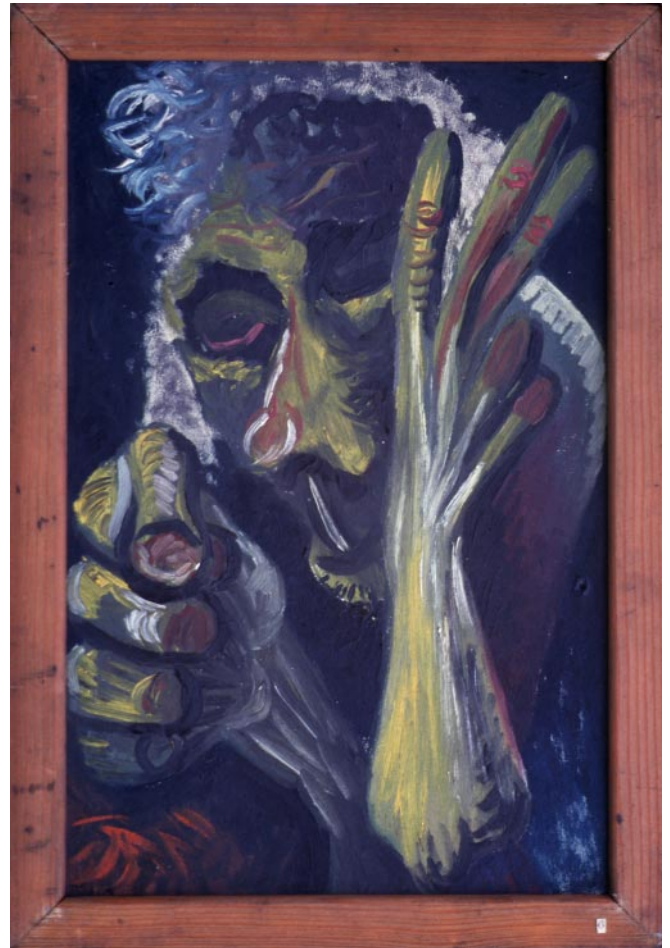
4709 06 - 61 x 51 1947



5863 12a - 46 x 36 1947



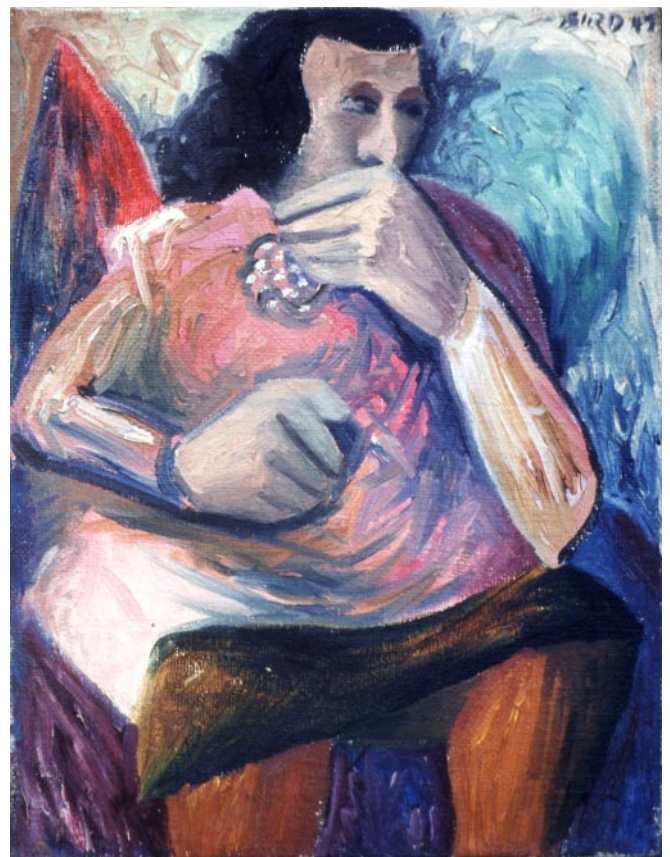
5863 04 - 61 x 51 1947



5863 26 - 59 x 40 1947 Board



5863 03 - 61 x 51 1947



5863 13b - 46 x 36 1947



4710 23 - 61 x 41 1948



4710 24 - 61 x 41 1948



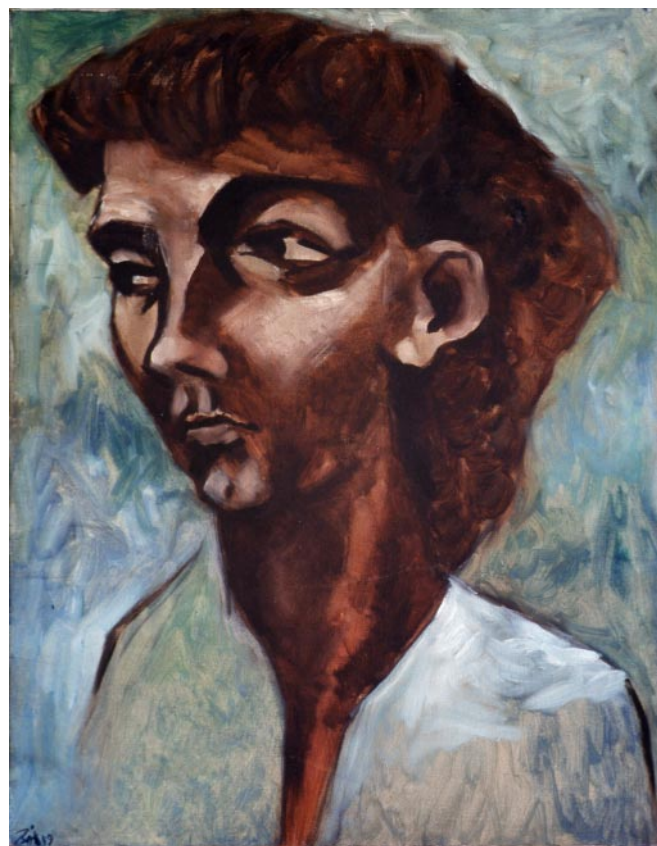
5863 35 - 77 x 51 1948



4709 29 (77 x 63 1948)



4709 15 - 65 x 51 1949



4709 14 - 65 x 51 1949



4709 31 - 77 x 63 1948



5863 28 - 88 x 63 1947 Board



4709 18 - 65 x 51 1949



4709 34 - 77 x 63 1949



4710 36 - 51 x 41 1949



5863 17b - 46 x 36 1949



4710 37 - 41 x 51 1948



4709 33 - 77 x 63 1948



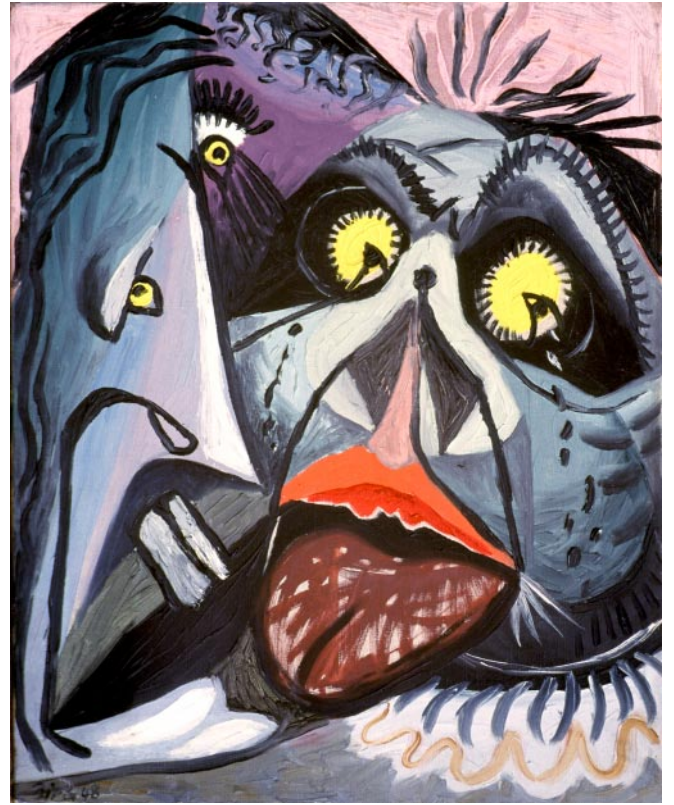
4710 29 - 51 x 41 1948



4710 26 - 56 x 46 1948



5863 14a - 46 x 36 1948



4710 31 - 51 x 41 1948



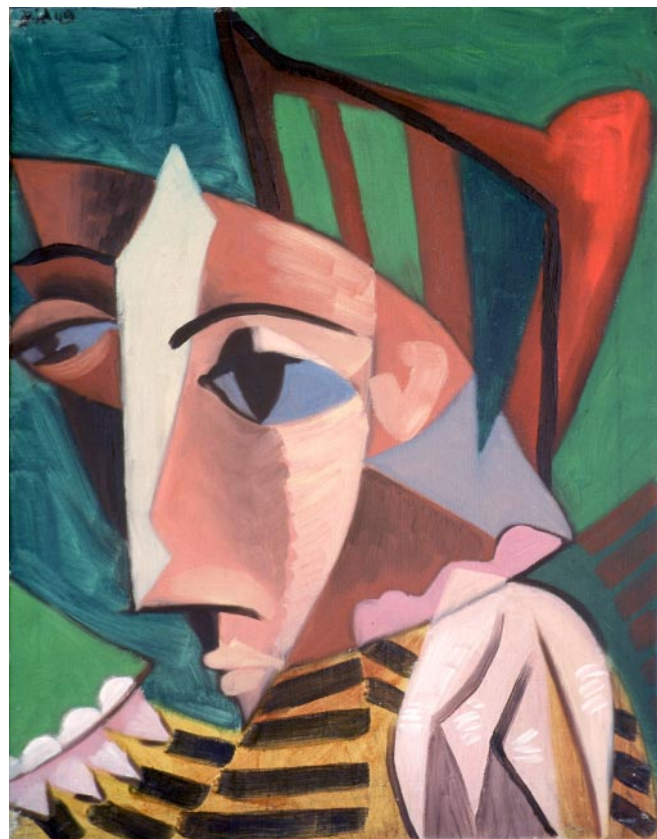
5863 12b - 36 x 46 1947



4709 08 - 61 x 51 Unsigned



4710 04 - 77 x 65 1949



4709 19 - 65 x 51 1949



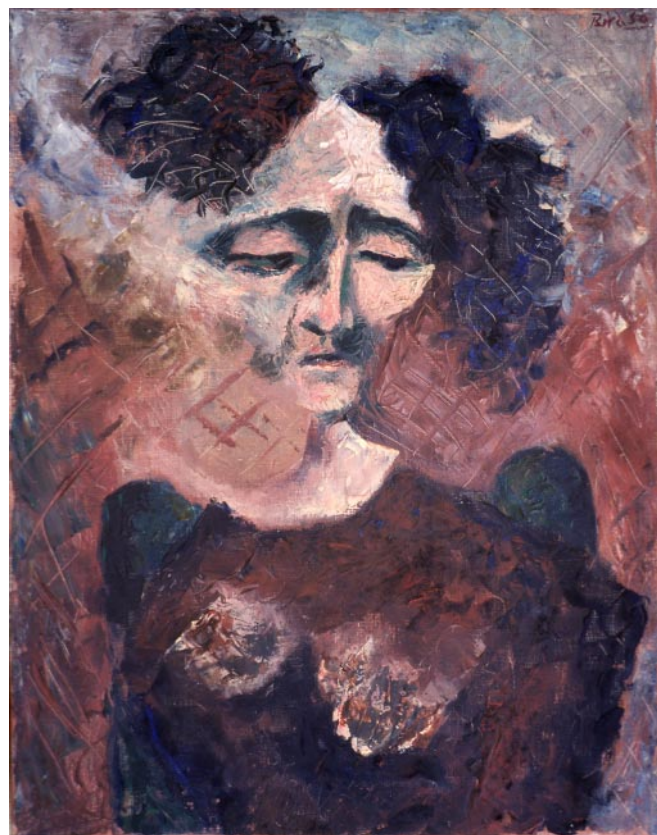
4710 33 - 51 x 41 1949



4710 32 - 51 x 41 1948



4709 36 - 77 x 63 1950



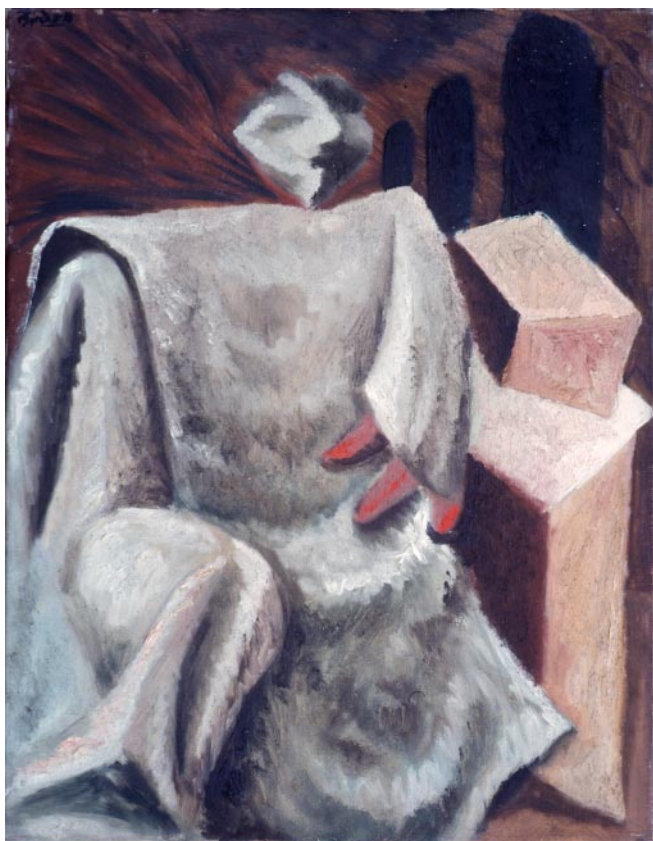
4709 16 - 65 x 51 1950



4710 02 - 77 x 65 1948



4710 34 - 51 x 41 1948



4709 13 - 65 x 51 1950



4676 36 - 51 x 61 1948



4709 03 - 61 x 51 1948



4676 32 - 61 x 51 1948



5863 21 - 56 x 33 1948



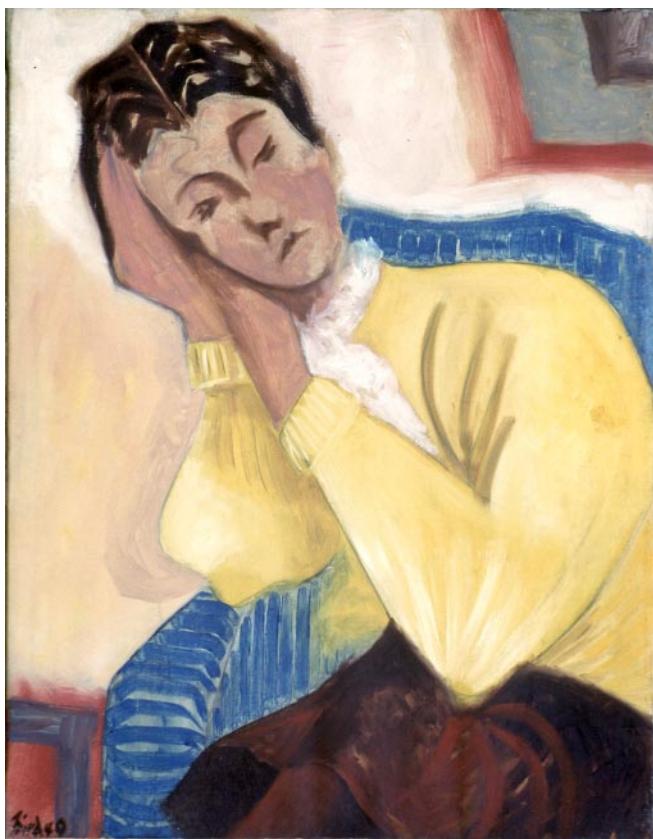
5863 18b - 36 x 46 1948



4709 10 - 61 x 51 1949



4709 05 - 61 x 51 1949



4709 20 - 65 x 51 1949



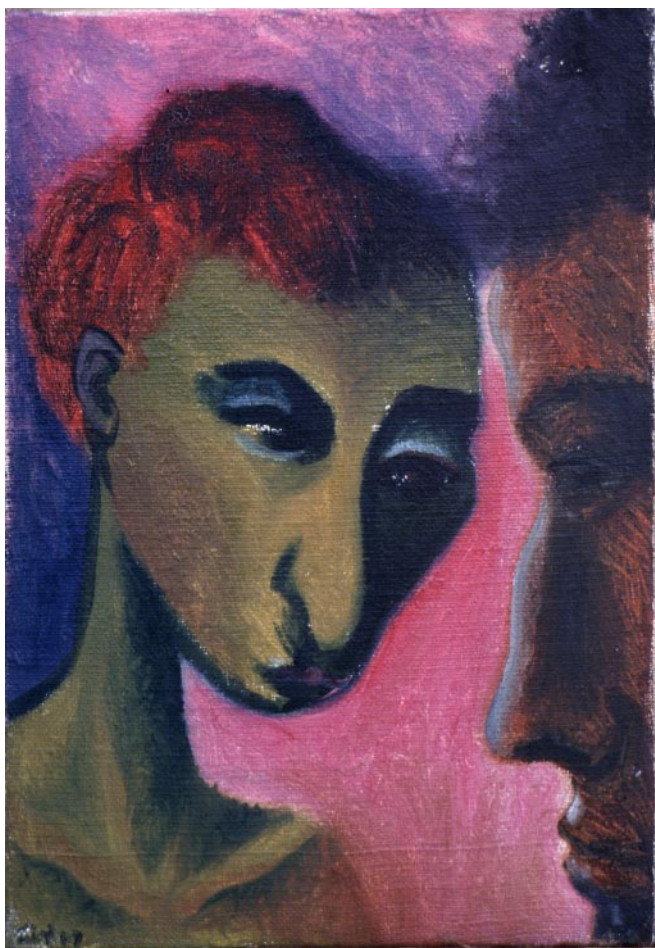
4709 21 - 51 x 63 1949



5863 10a - 41 x 51 1947



5863 19b - 26 x 51 Unsigned



5863 09a - 51 x 36 1949



5863 22 - 51 x 31 1948



5863 27 - 68 x 58 1948 Board



4709 04 - 61 x 51 1949



4710 08 - 65 x 77 1949



4710 13 - 91 x 61 1949



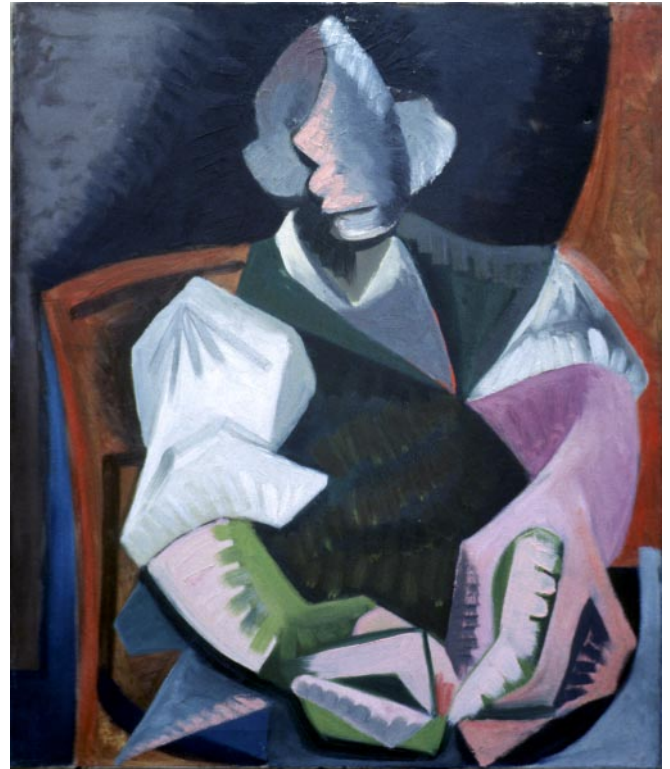
4710 10 - 77 x 65 1949



4710 14 - 61 x 91 1949



4676 14 - 51 x 61 1948



4676 15 - 61 x 51 Unsigned



5863 15b - 41 x 31 1948



4709 09 - 51 x 61 1949



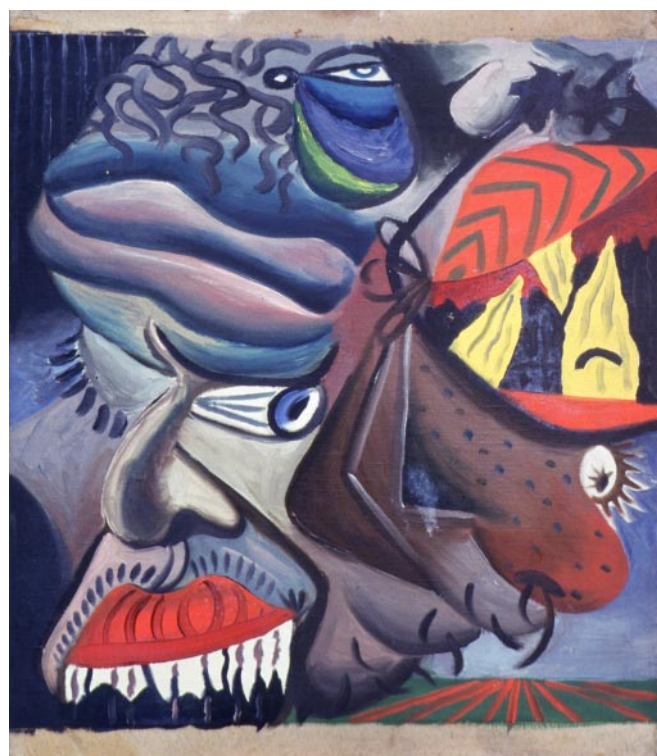
5863 18a - 41 x 36 Unsigned



5863 19a - 51 x 26 Unsigned



5863 29 - 82 x 60 1948 Board



5863 20a - 45 x 38 Board Unsigned



4709 25 - 77 x 51 1948



4676 16 - 61 x 51 1948



4709 12 - 61 x 51 1950



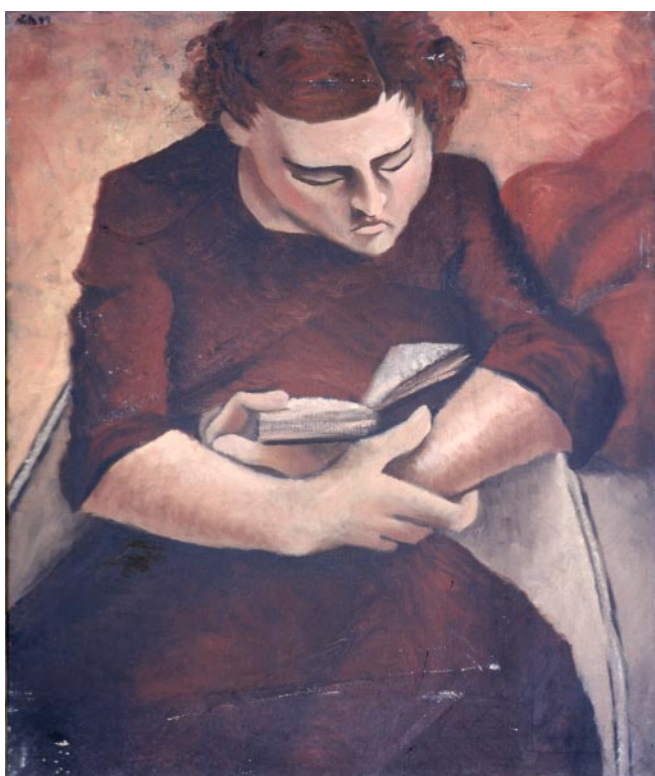
4709 22 - 65 x 51 1950



4710 11 - 77 x 65 1948



4676 38 - 61 x 51 1948



4710 09 - 77 x 65 1949



4710 05 - 77 x 65 1948



5863 17a - 46 x 36 1948



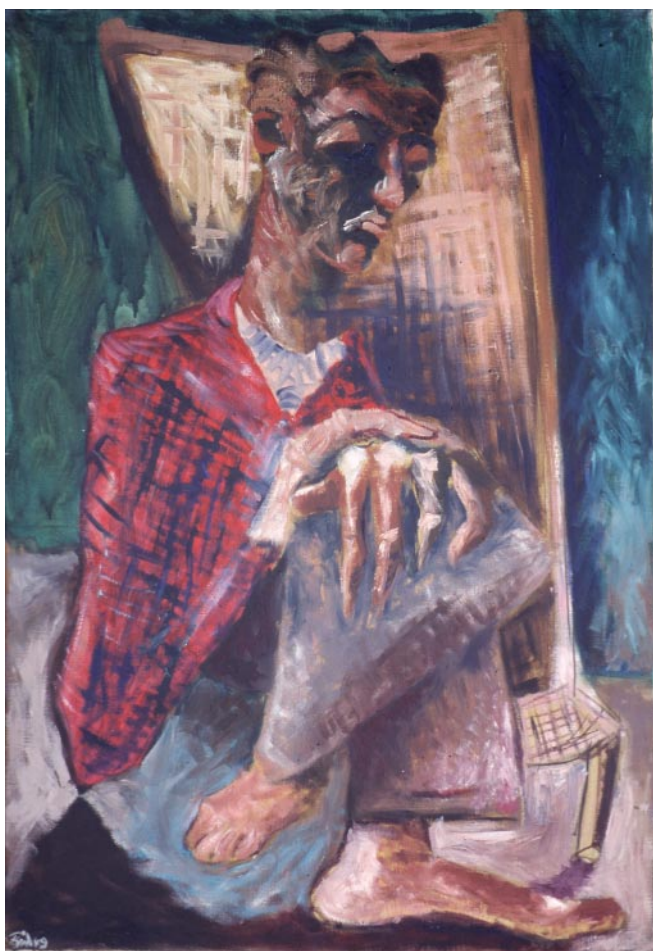
4710 06 - 65 x 77 1949



4710 18 - 91 x 61 1949



4709 07 - 61 x 51 1949



4710 21 - 91 x 61 1949



4710 19- 91 x 61 1948



4676 39 Unsigned



4710 28 - 51 x 41 1949



5863 15a - 31 x 41 1946



4710 07 - 77 x 65 1948



4710 12 - 91 x 61 1949



4709 11 - 61 x 51 1949



4710 30 - 51 x 41 1949



5863 20b - 42 x 38 Board 1948



4676 33 - 61 x 51 Unsigned



4709 35 - 77 x 63 1950



4710 03 - 77 x 65 1949



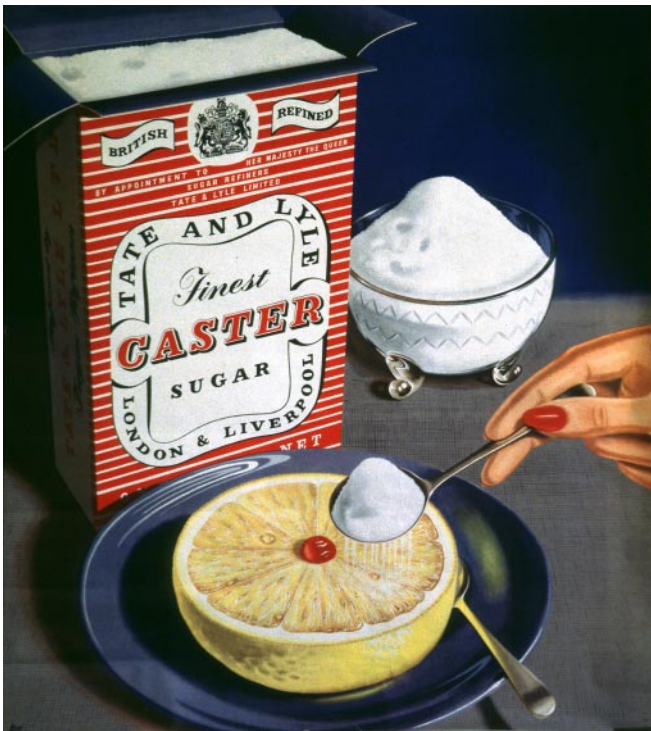
4709 32 - 77 x 63 1949

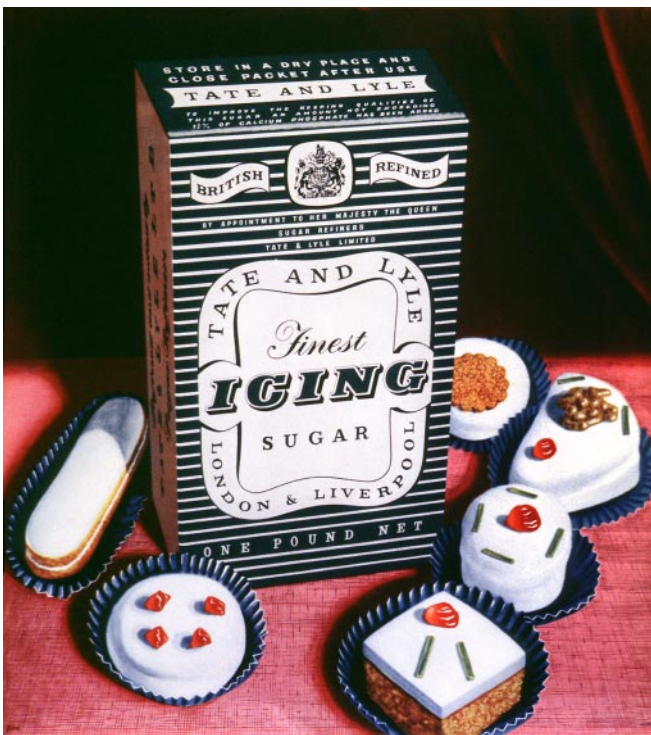


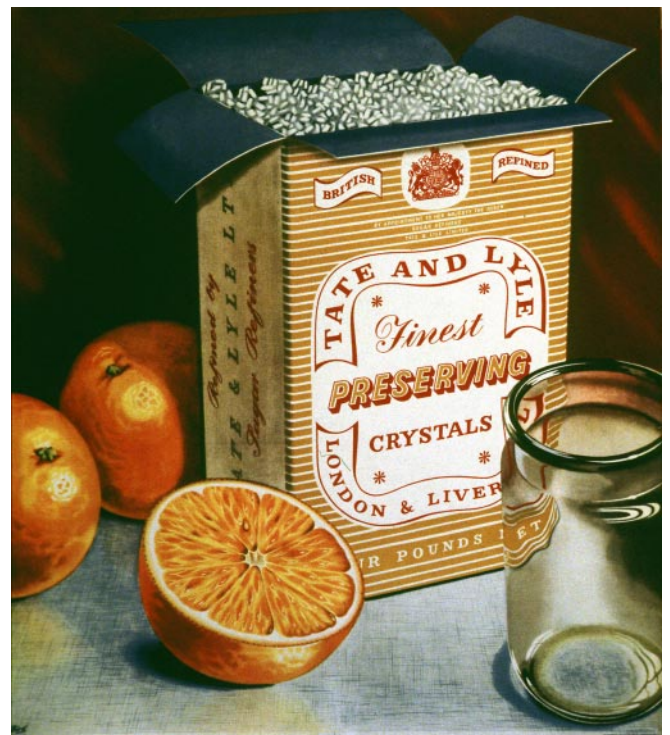
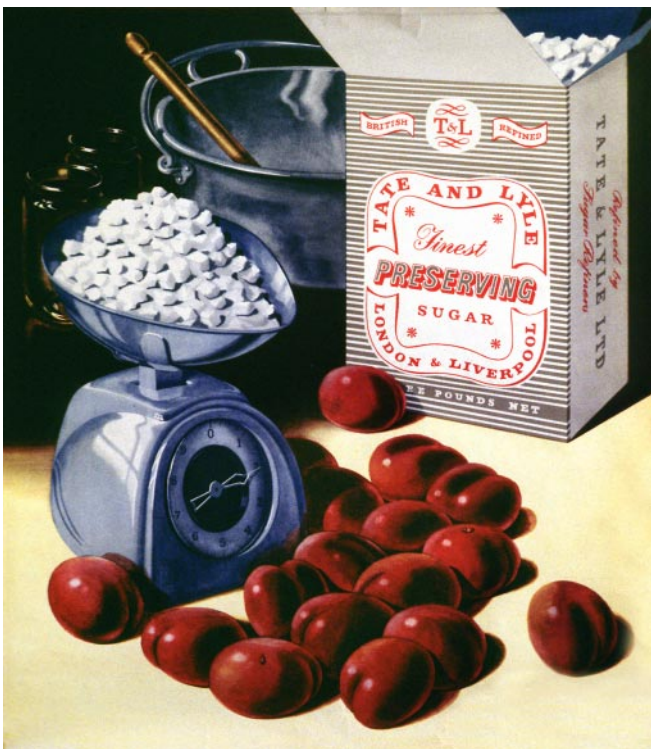
4709 17 - 65 x 51 1949



95 33 Birdman '40s

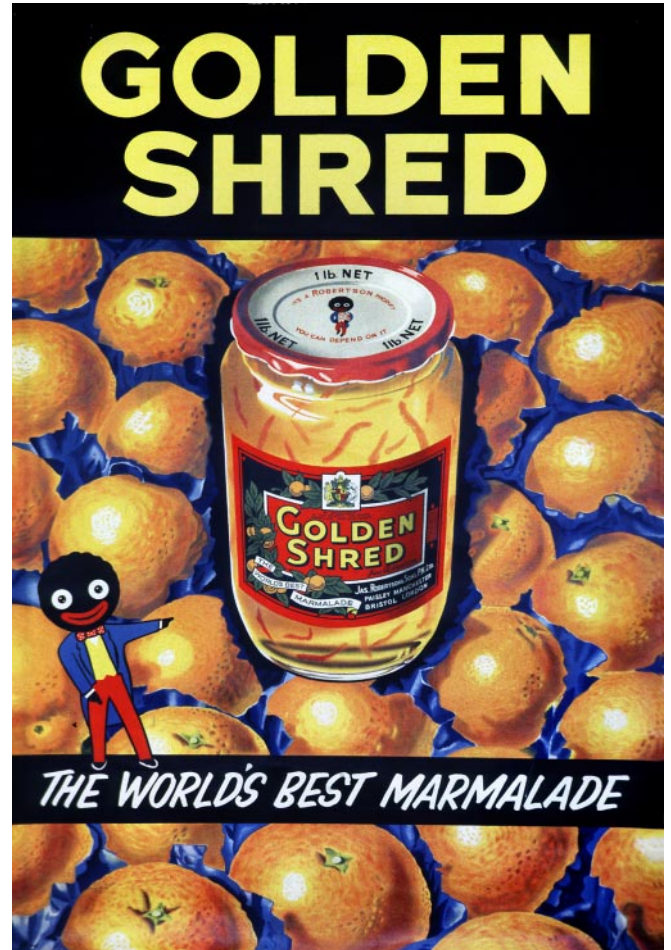








100 x 100



150 x 100

150 x 100



150 x 100





All 150 x 100



ROBERTSON'S MINCEMEAT



The centre of attraction

Robertson's MINCEMEAT

tastes
home
made




Robertson's MINCEMEAT

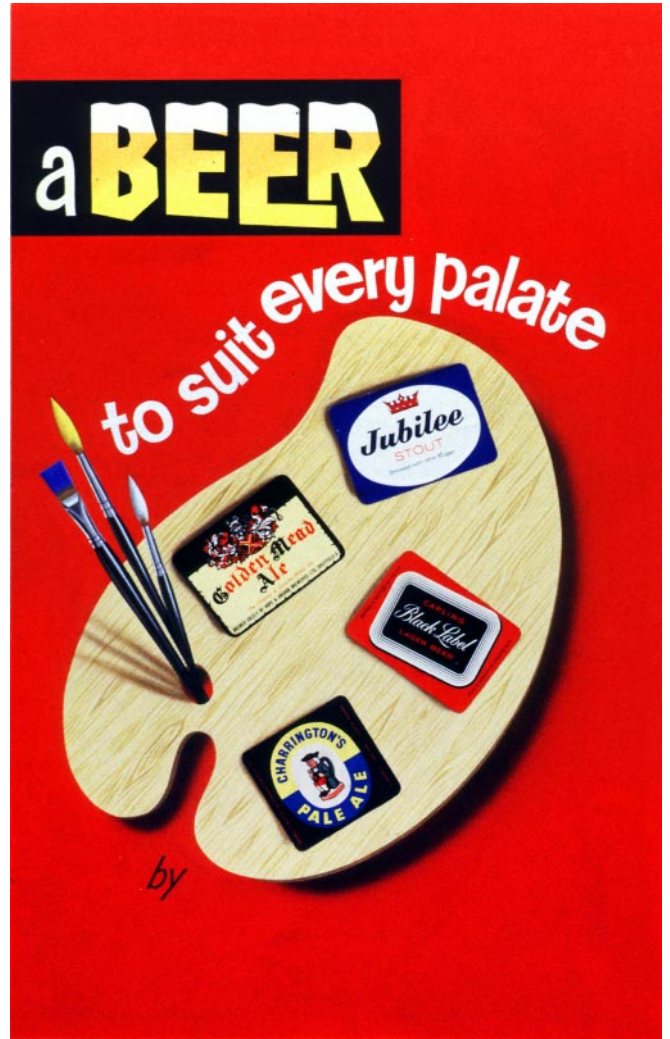
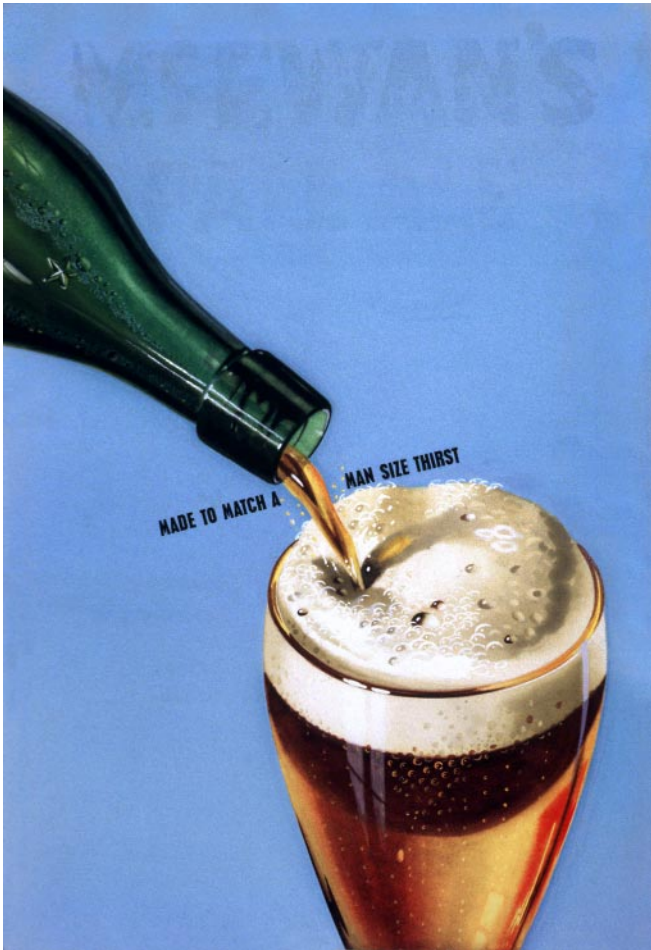


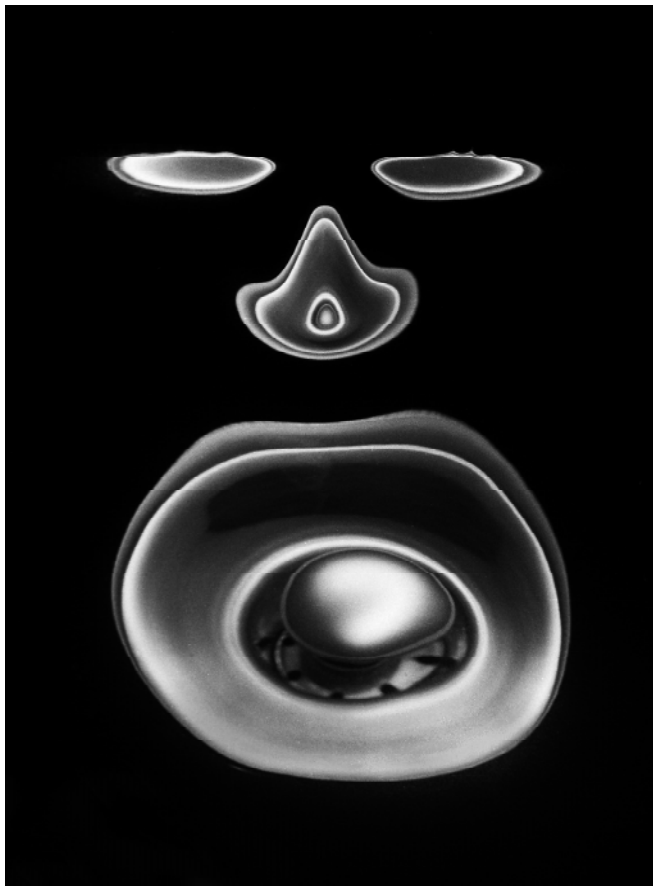
some good things
don't change

Don't give up walking...

...use







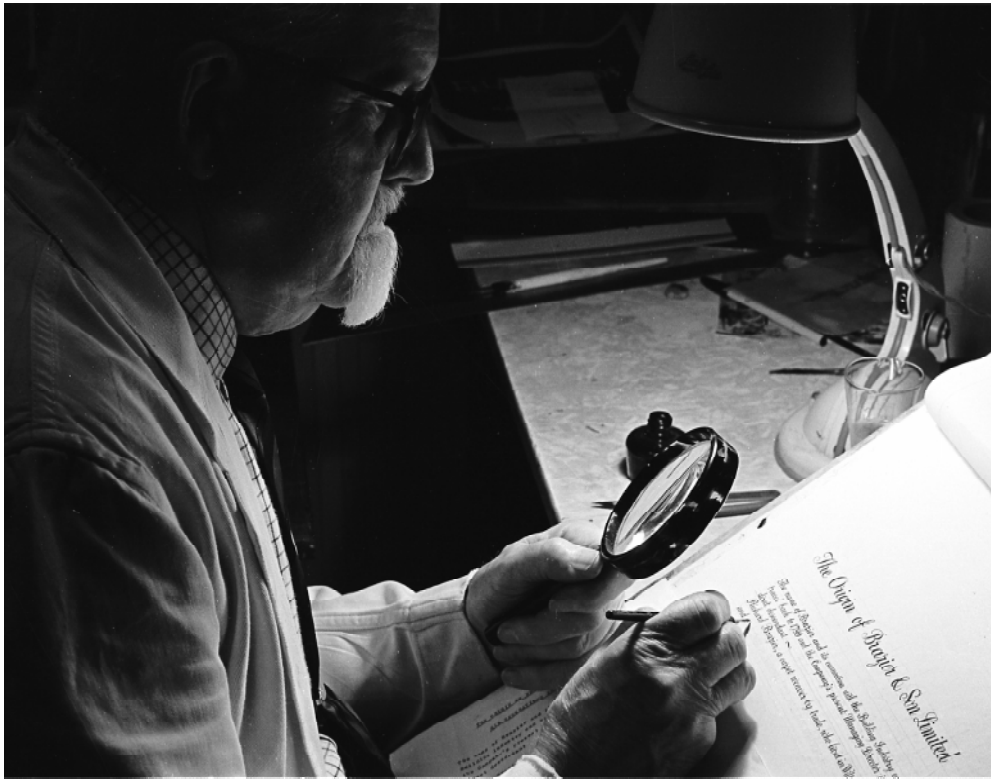
00 The Evil One



11 Portrait of the Artist (Gordon's father)



14 Departure of Queen Elizabeth



14 Scribe (Gordon's father)



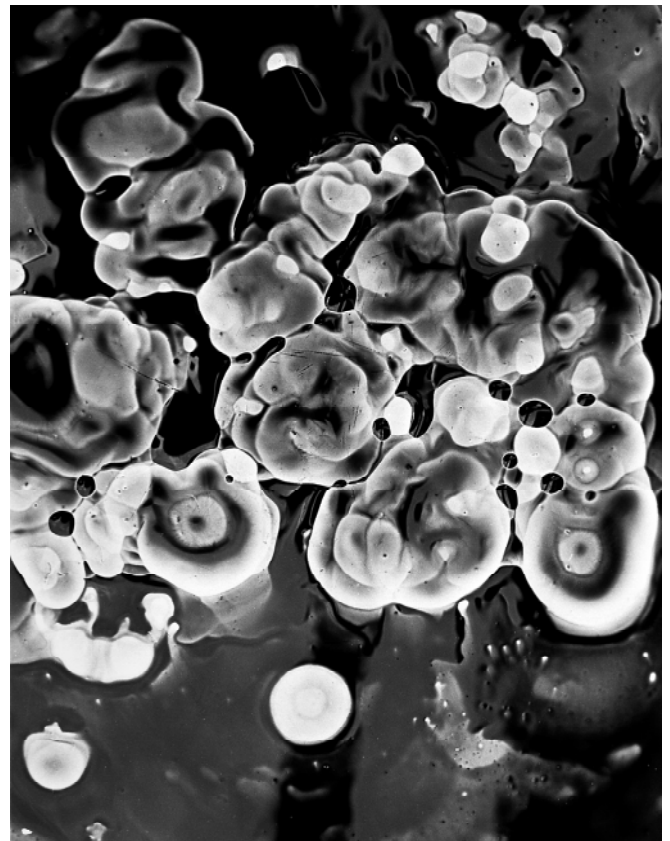
15 Wallaby Structure



17A Figure Study



17 Portrait of the Artist (his dad)



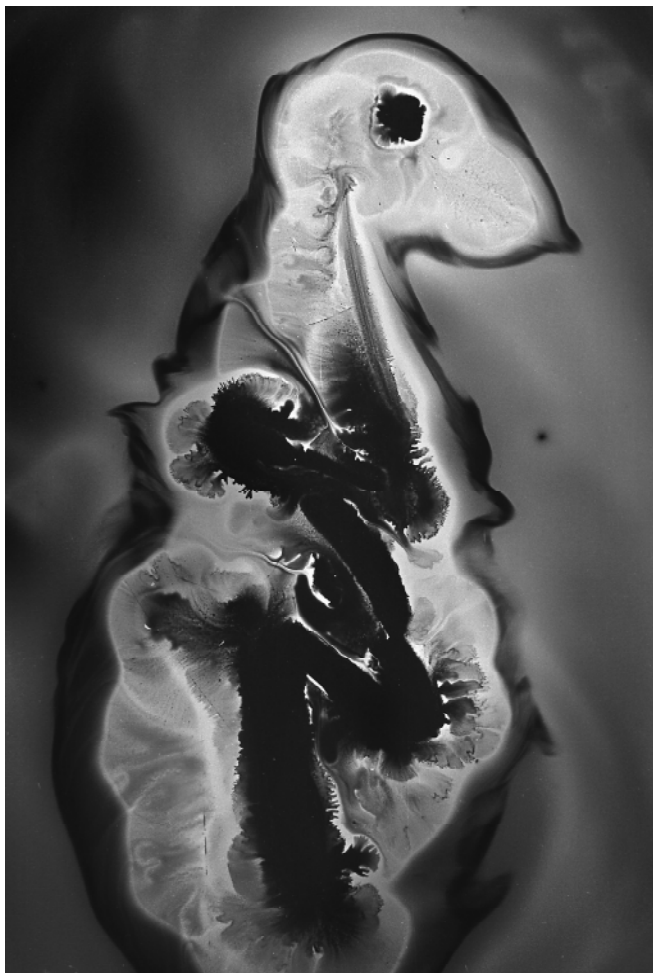
18 Flower Abstract



19 Boy'n Bike



21 Skull 1



23 Embryo 1



23 Monocled Head Structure



24 Nuclear Abstract



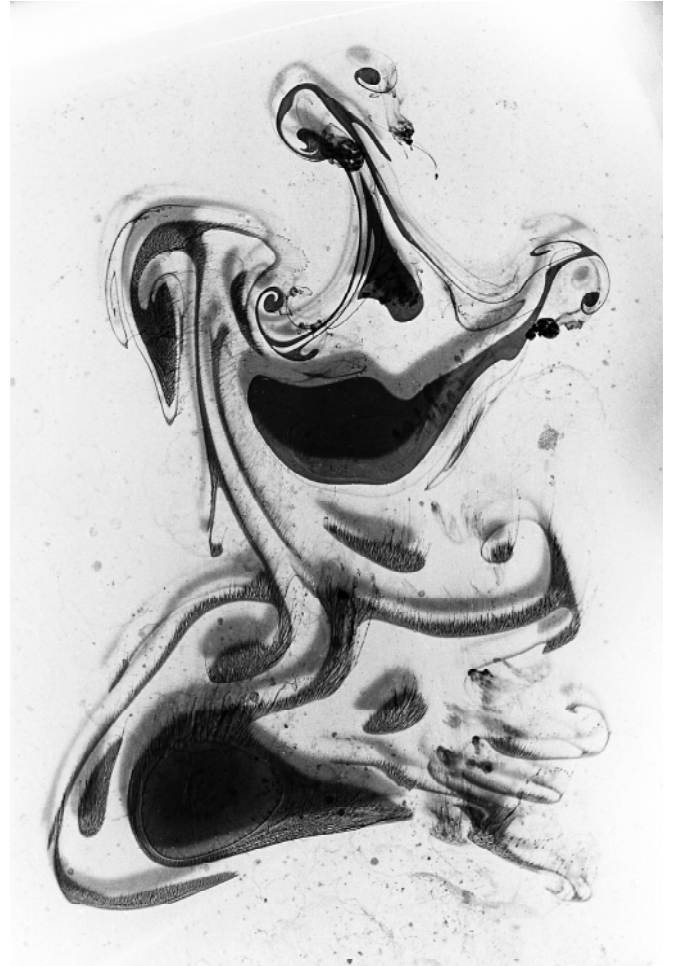
31 Portrait of the Artist (his dad)



26 Self Portrait with friend 1



31 Disintegrating Form



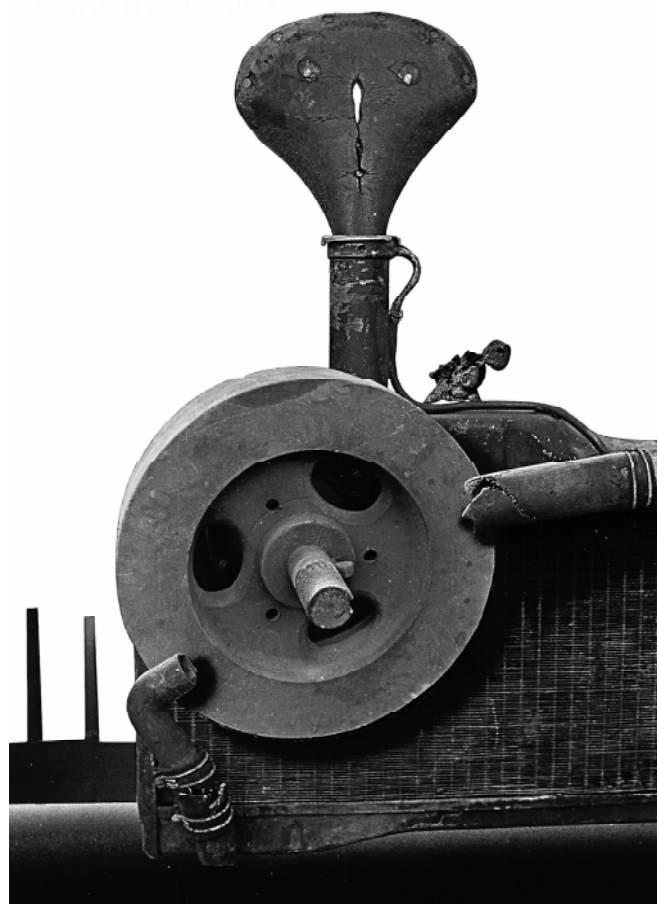
32 Greeting Figure Structure



34 Submerging Form



36 Self portrait with Friend 2



36A Mother and Child



37 Small creature taken by surprise



36 Beach Creature



36 Rising Tree Form



Balancing Forms



Cascade



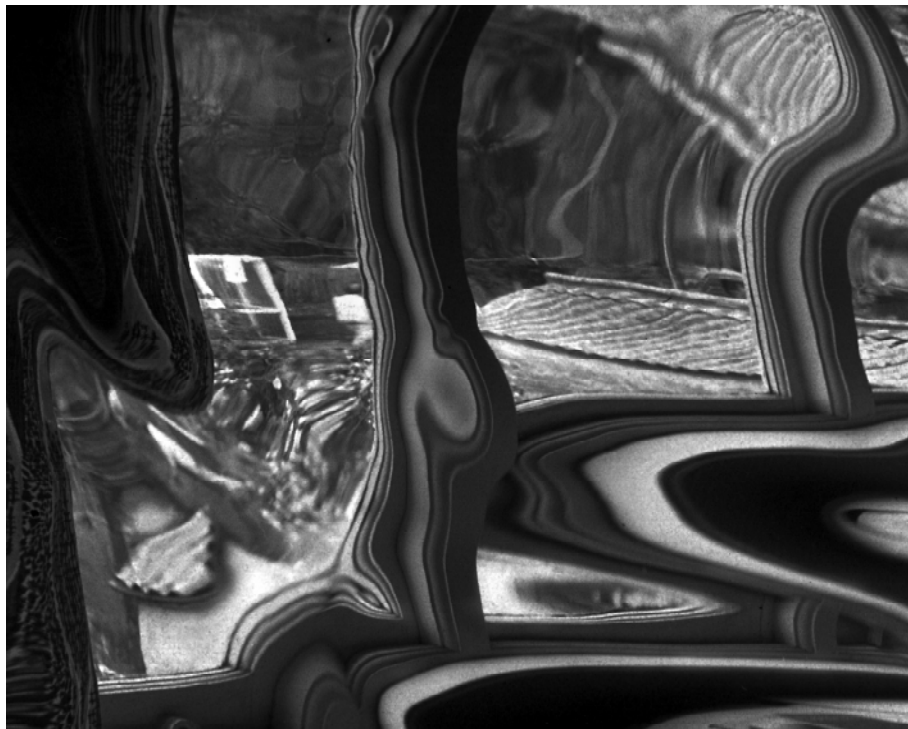
Confrontation



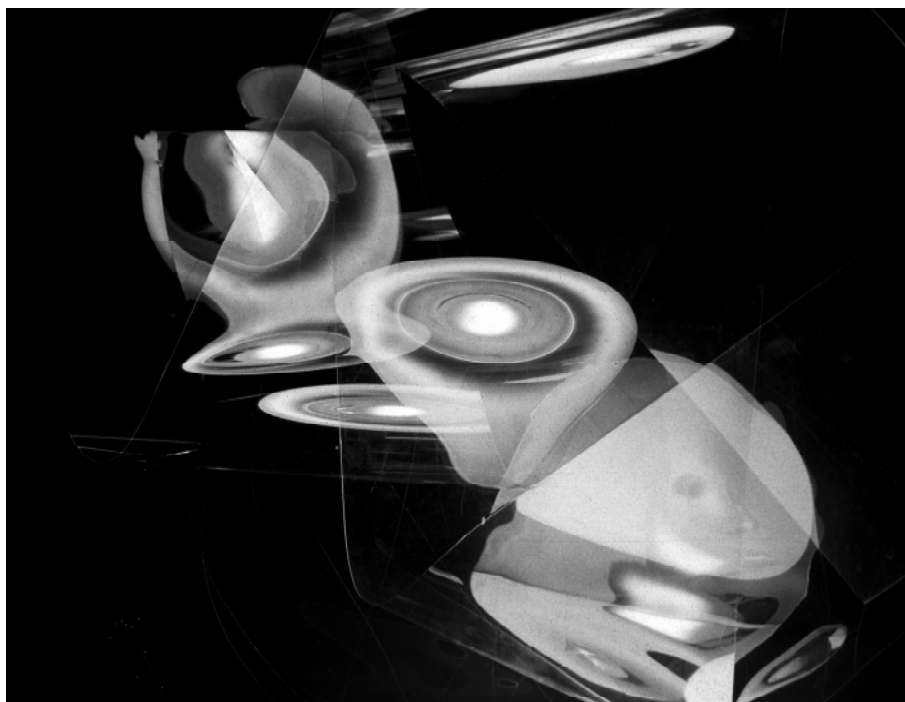
Disintegrating Forms



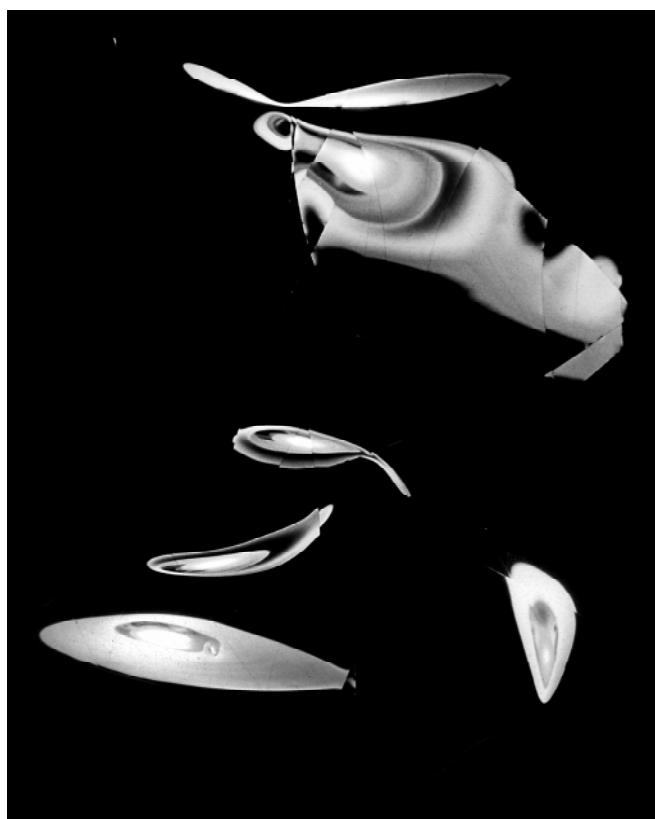
Forms Attendant



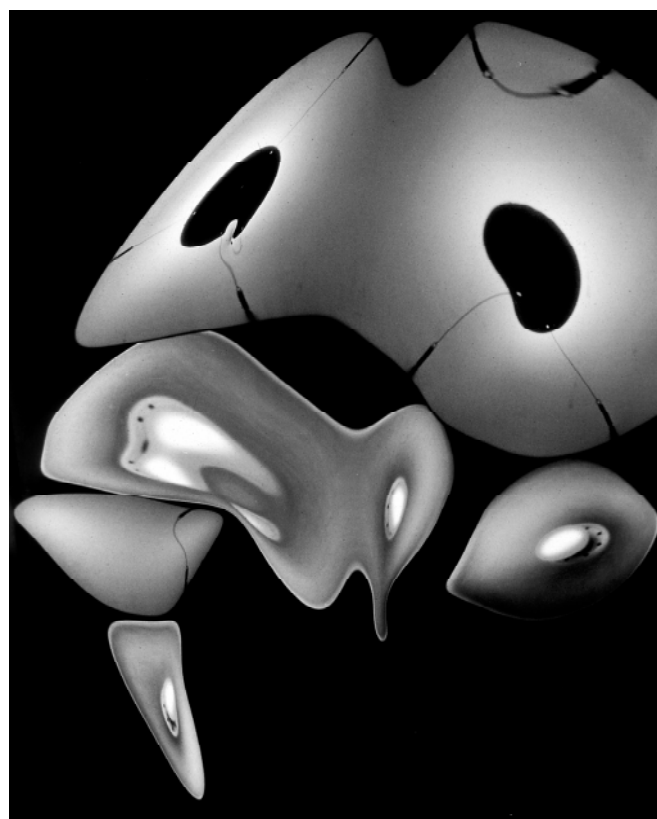
Disturbed Landscape



Forms in Distress



Forms in Flight



Light Forms



Sylvan Glade II



Rising Forms



Forms Pursued



1973

Bound Figure

70 x 56



1973

Protest II

64 x 52



1974

Private Crucifixion II

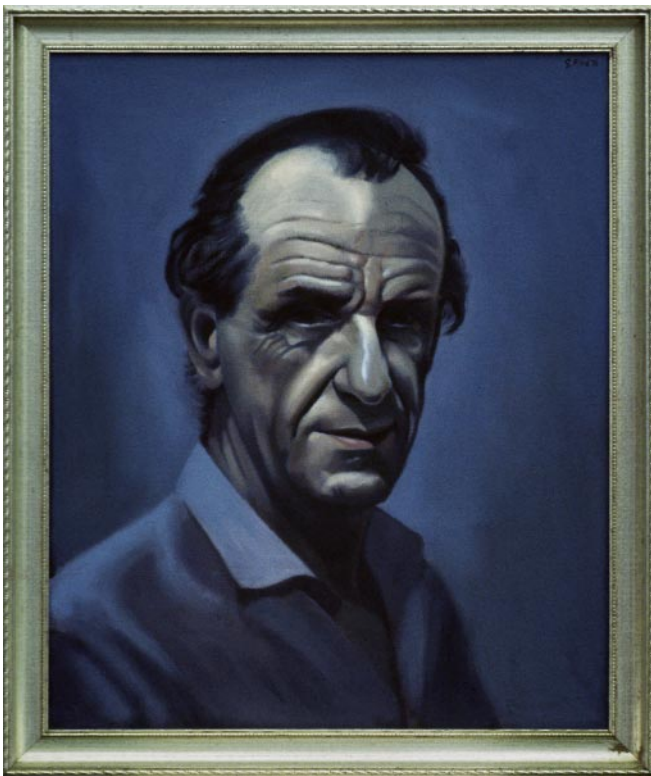
100 x 86



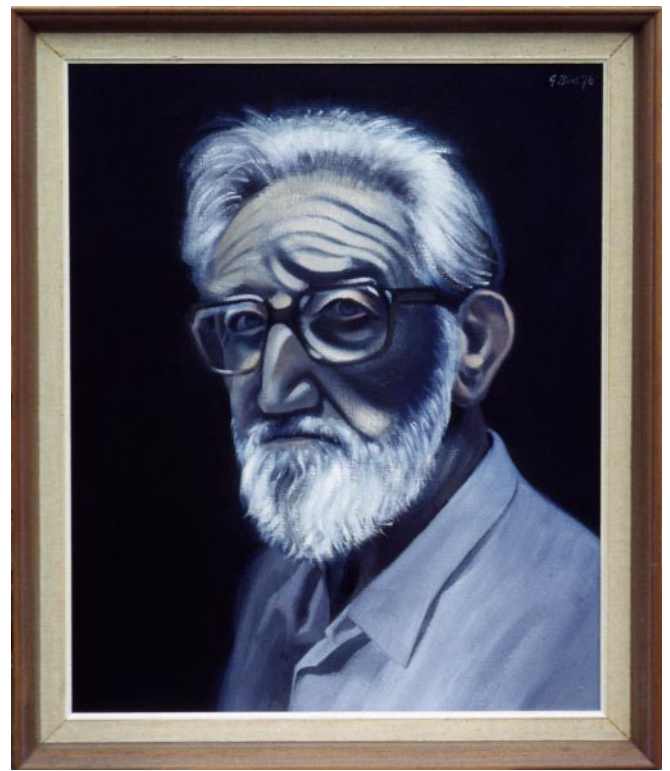
1972 Wood Forms II 70 x 60



1972 Wood Forms III 57 x 41 (Gouache)



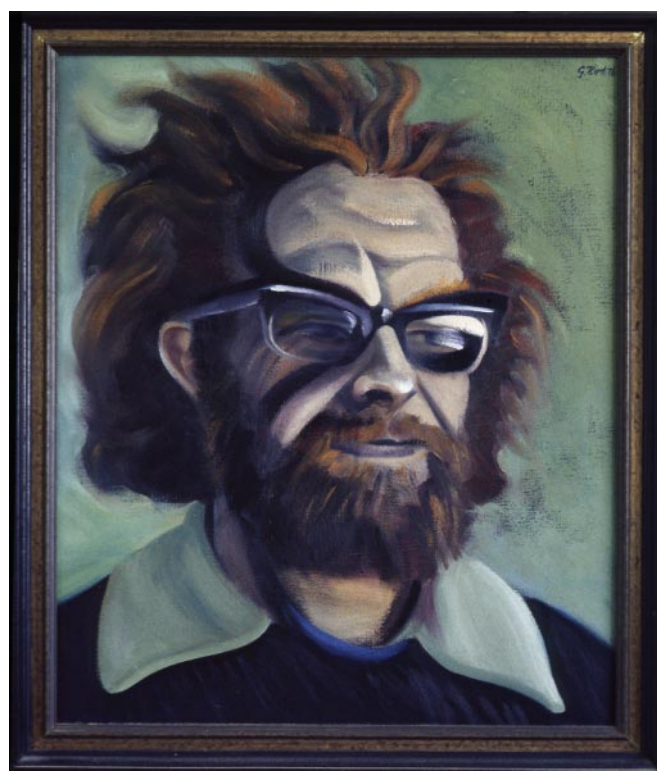
1976 Portrait of Leslie Batchelor-Smith 64 x 52



1976 Portrait of Colin Neville 65 x 56



1977 Portrait of Ursula Jeffree 45 x 35



1976 Portrait of Paul Jeffree 68 x 58



1976 Portrait of Ursula Jeffree 112 x 108



1974

Bride and Groom

98 x 77



1974

Politician

73 x 57

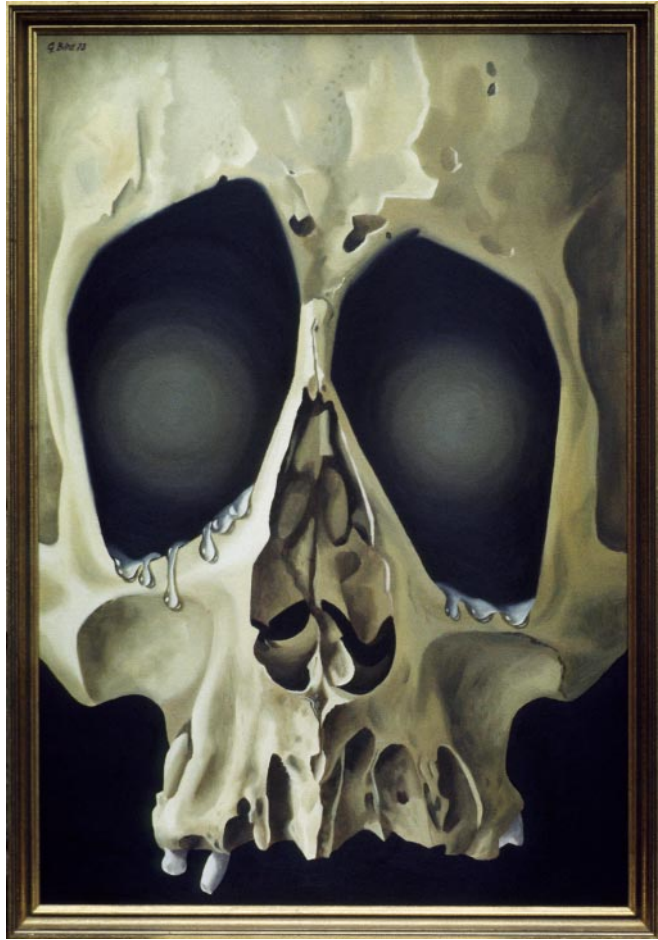


1974

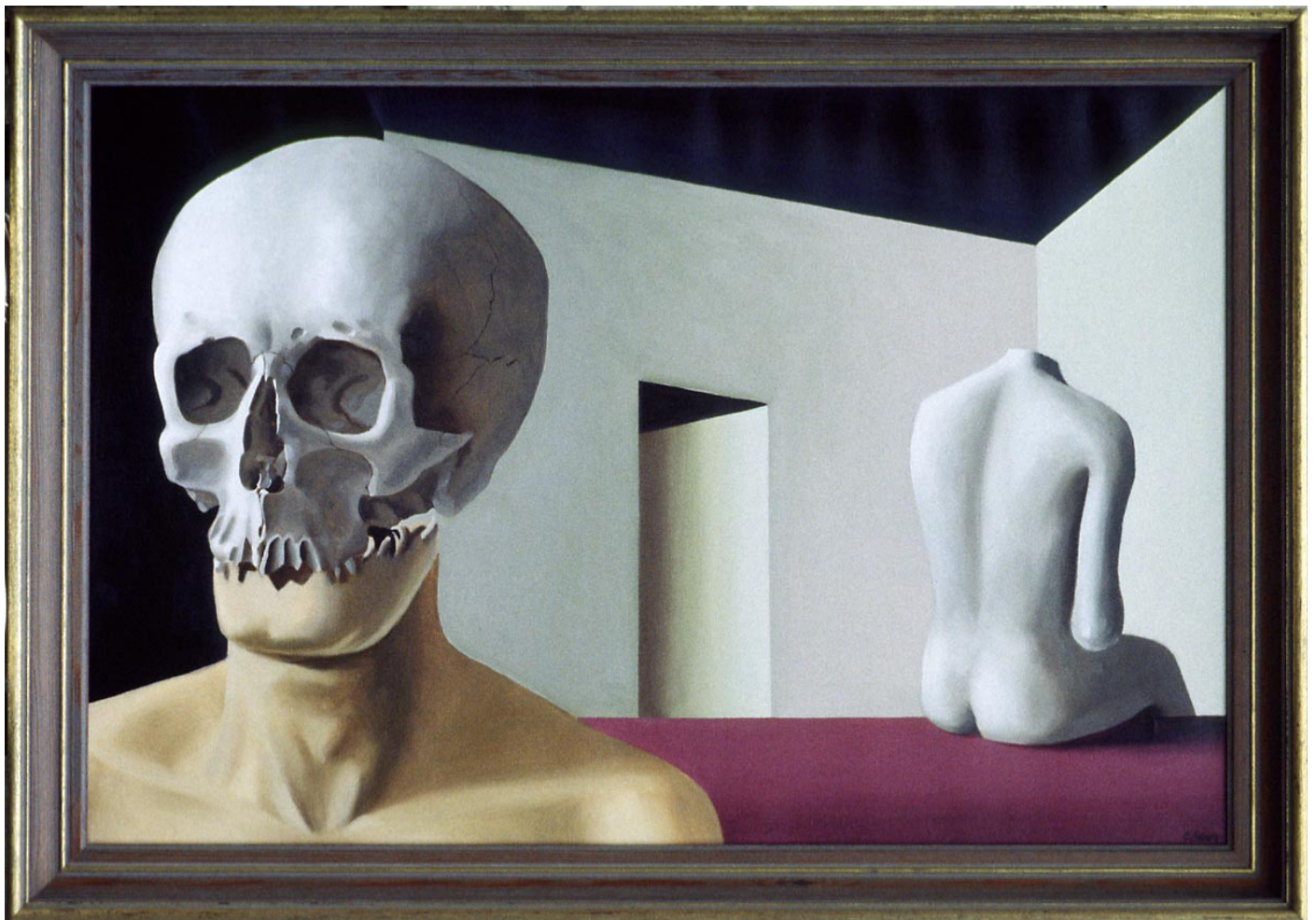
Office Worker

68 x 52

1973 Weeping Skull 81 x 55



1977 Indifference 59 x 85





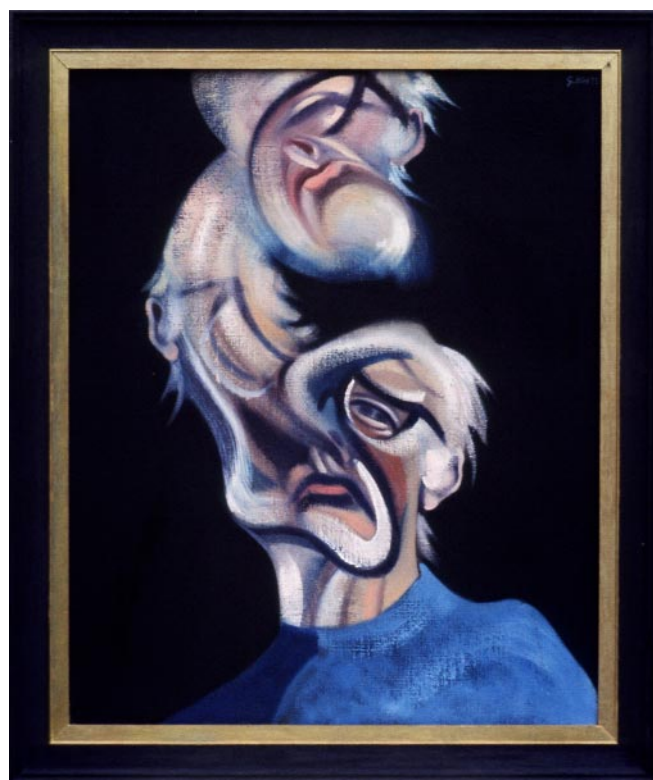
1974 Baby 51 x 61



1975 The Birthday Party 80 x 100



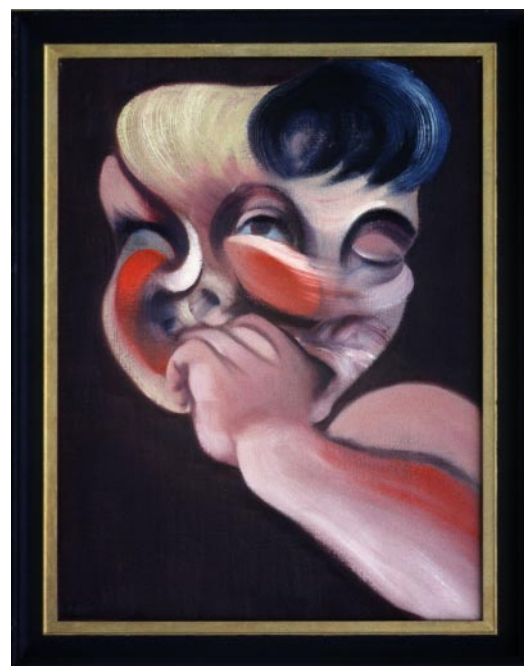
1989 Figure Study 97 x 56



1977 Self Portrait 59 x 49



1977 Figure Study 68 x 52



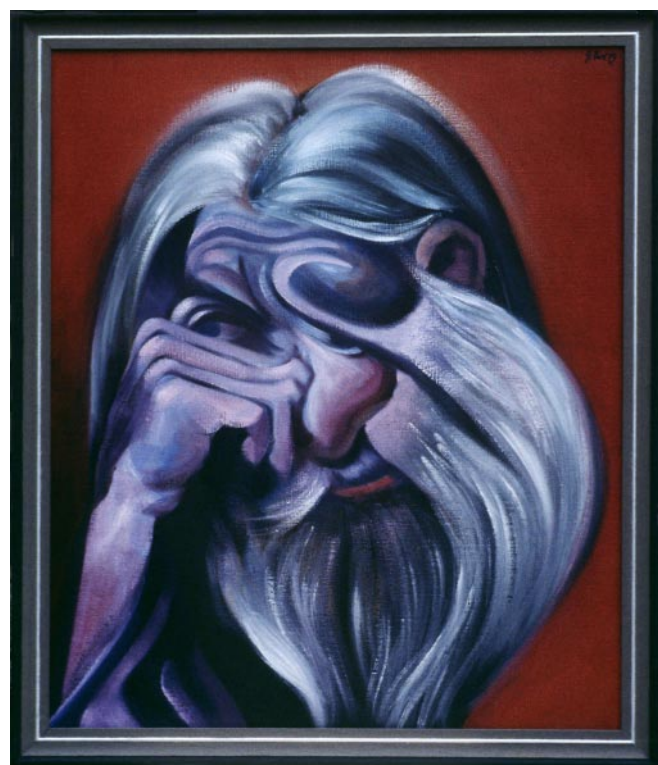
1978 Mother and Child 46 x 36



1974 Beginning and End 84 x 69



1974 Private Crucifixion I 66 x 56



1979 Head Study 66 x 55



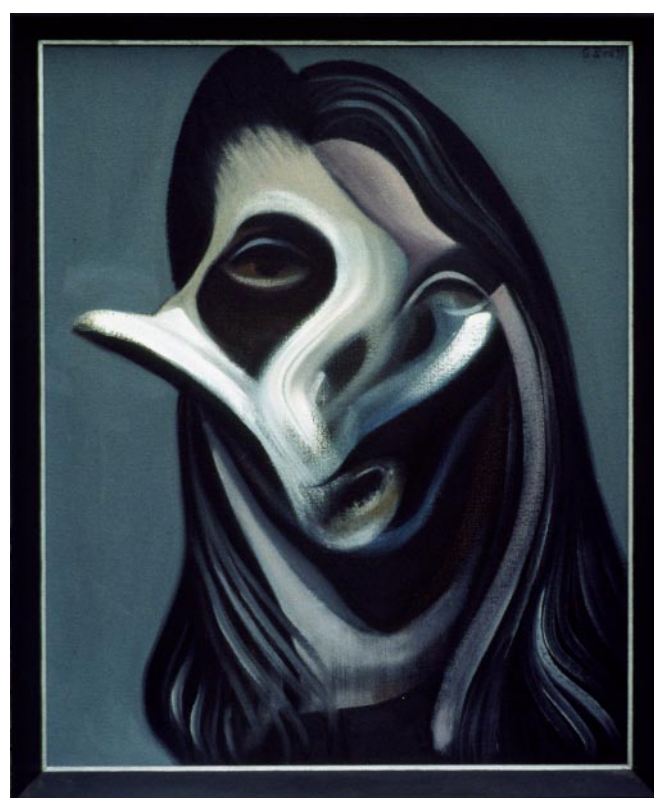
1976 Disturbed Adult 98 x 107



1985 Self Portrait on a Staircase 109 x 99



1975 Cretan Woman 75 x 57



1977 Female Head 55 x 45



1983

Figures on a Beach

110 x 100



1975

Soft White Evil

109 x 82



1991

The Chair

110 x 84



1976

Street Scene

110 x 110



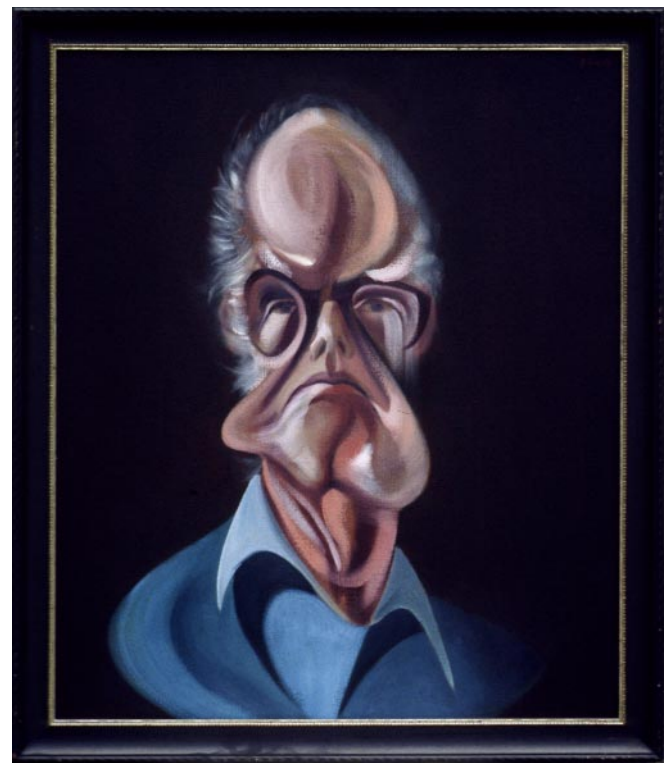
1978

Figure Study

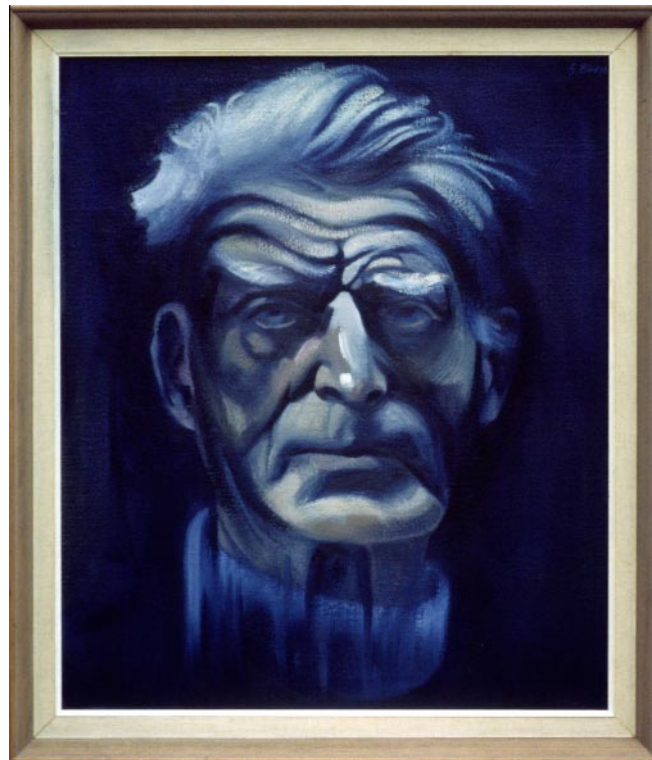
110 x 98



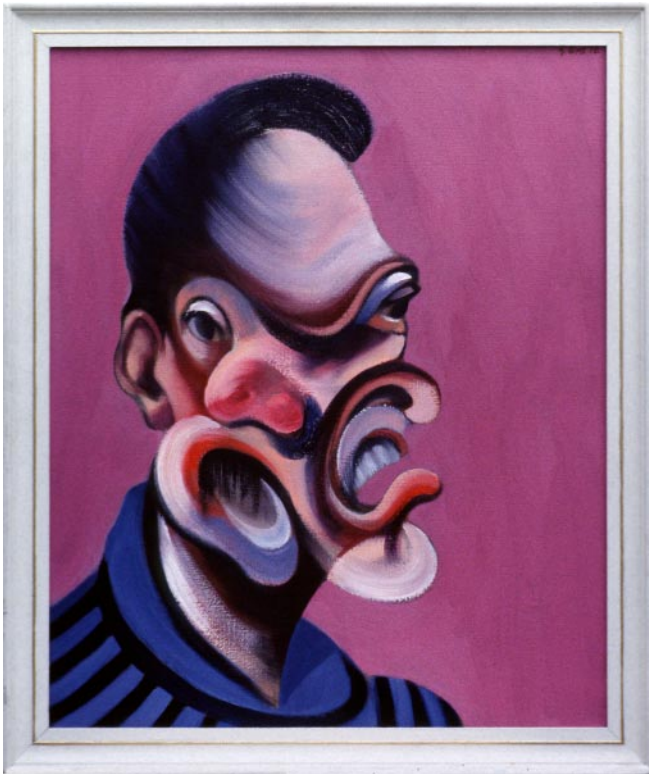
1977 Portrait of Samuel Becket 67 x 57



1978 Self Portrait 65 x 53



1978 Portrait of Samuel Beckett 69 x 58



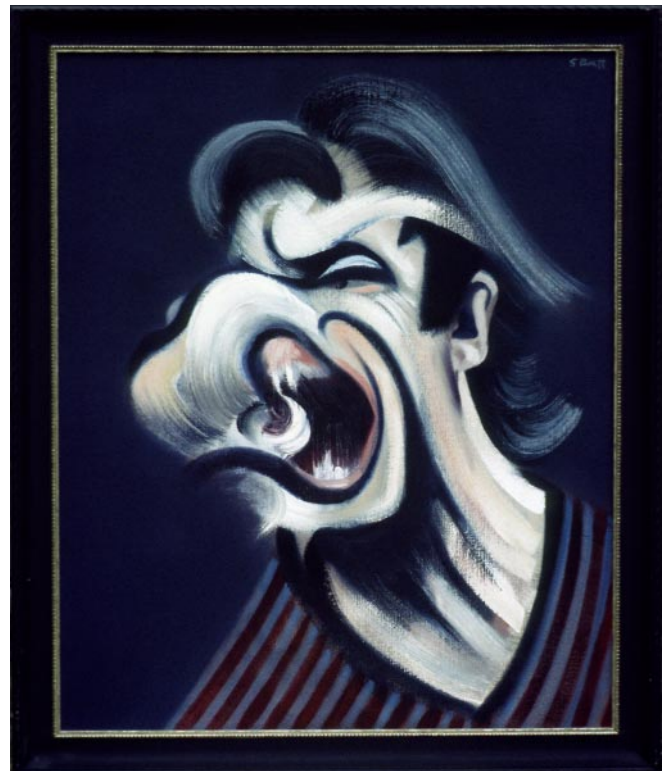
1978 Head Study I 56 x 45



1977 Two Figures 65 x 54



1978 Figure Study 68 x 55



1977 Head Study II 63 x 51



1978

Head Study I

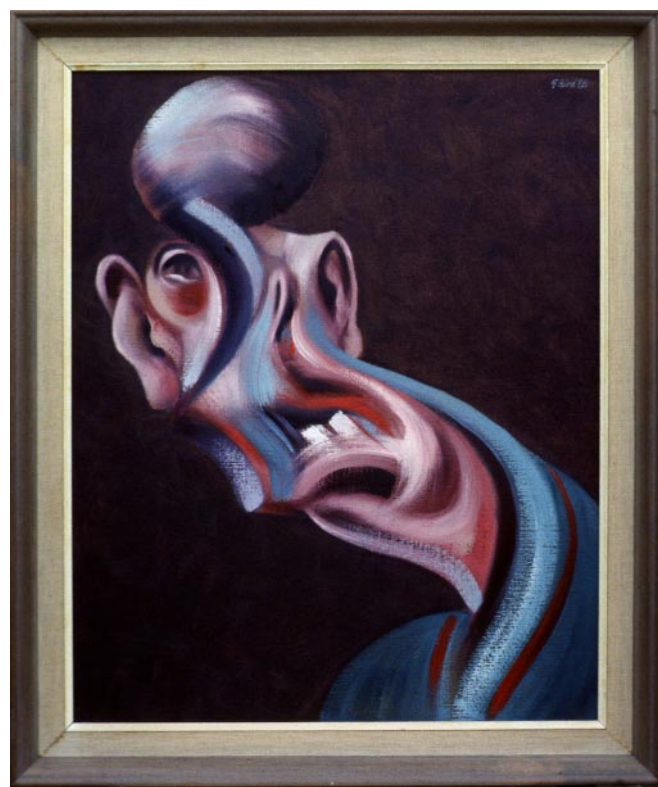
45 x 35



1977

Self Portrait

59 x 47



1978

Head Study I

59 x 48



1979 Figure Study 109 x 100



1977 Seated Figure 80 x 65



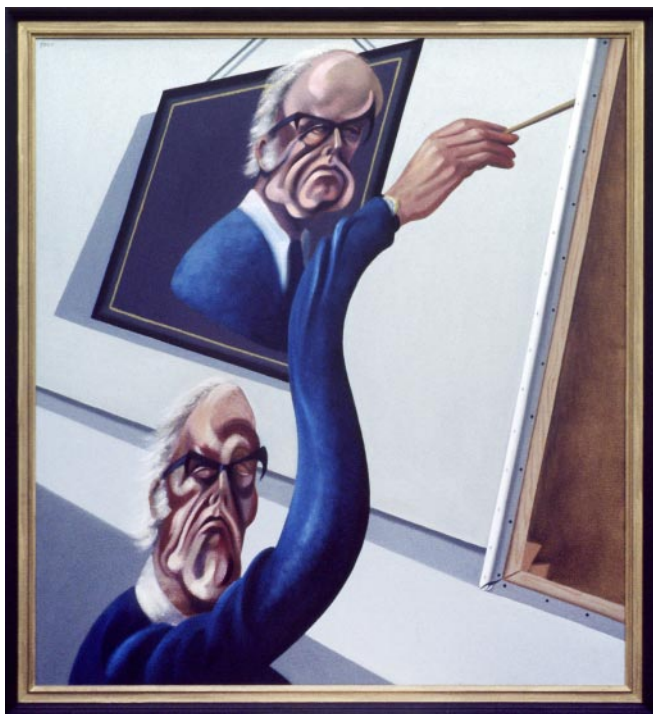
1978 Dead Elephant II 108 x 98



1978 Dead Elephant 105 x 95



1977 Suspended Man Structure 108 x 97



1977 Self Portrait 110 x 100



1986 Ice Skater 109 x 97



1978

Seated Figure

108 x 99



1978

Figure Study

109 x 98



1978

Figures in a Room

110 x 110



1986

Self Portrait in Bed

110 x 98



1985

Figures Observed

110 x 100



1979

Head Study

68 x 68



1984

Head Study I

70 x 58



1976

Seated Figure

98 x 67